

Output Modules



SNNE-0008D-0006
SNNE-0008D-0002



- Rugged, Fully Potted Stations
- IP 67 Protection
- Small Footprint
- Modular I/O System

Electrical

- Operating Current: <75 mA plus sensor currents (from U_B)
- Output Current: See table on facing page (from U_L)

Power Distribution

- Outputs: U_L Power supply

Mechanical

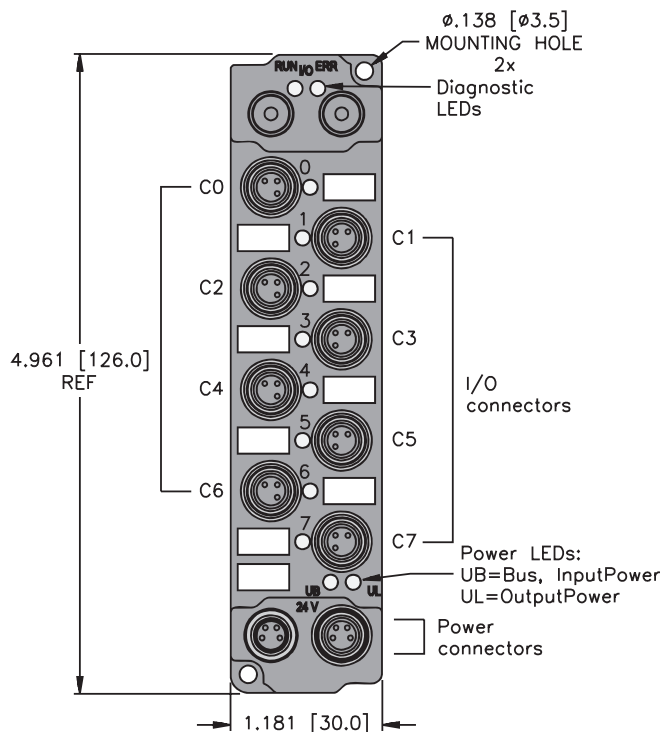
- Operating Temperature: 0 to +55°C (+32 to +131°F)
- Protection: IEC IP 67
- Vibration: IEC 68, part 2-6

Material

- Connectors: Nickel-plated brass
- Housing: Nylon

Diagnostics (Physical)

- LEDs to indicate status of module and system communication



Aux. Power

<i>picofast</i> Male	<i>picofast</i> Female
4-Pin	4-Pin

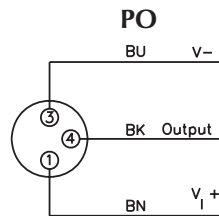
- 1 = U_B +
- 2 = U_L +
- 3 = GND
- 4 = GND

Outputs								Data
Part Number	Output Count	Connectors	Pinout	Outputs per Connector	Current	Individual Diagnostics	Wire-Break Detection	I/O Map
SNNE-0008D-0006	8	0-7	PO	1	0.5 A			1
SNNE-0008D-0002	8	0-7	PO	1	2 A*			1

*Note: Total output current for the station is limited to 4 A.

piconet

Output Connectors



Mating cordset:
PSG 3M-*

I/O Data Map 1

Out	Byte	Bit 7	Bit 6	Bit 5	Bit 4	Bit 3	Bit 2	Bit 1	Bit 0
	-1	Data for modules to left							
n	0-7	0-6	0-5	0-4	0-3	0-2	0-1	0-0	
n+1	Data for modules to right								